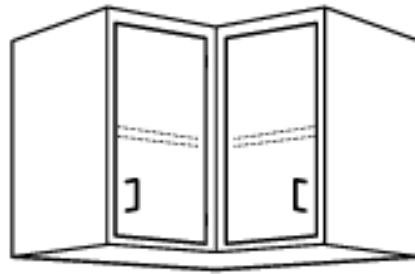


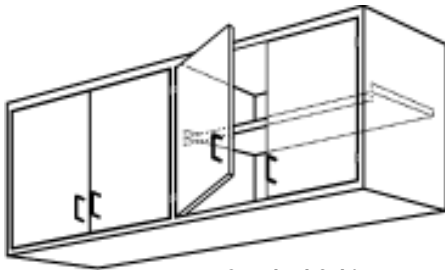


Wall Cabinet w/ Doors

**DOUBLE PAN
DOORS**



**Corner Cabinet
Model: WCCD**



**Standard Cabinet
Model: WCD**

**Fully Welded
No Assembly
Required**

MATERIAL

18g Stainless Steel, Type 304, #4 Finish

4" Bar Pull Handles

Stainless Steel Flag Hinge

16g Galvanized Hanger Channel

14g 304/4 Wall Clips

CONSTRUCTION

Double pan removeable doors for easy cleaning.

Fully welded construction.

Fixed intermediate shelf.

OPTIONS

- 16 Gauge Construction
- NSF Construction
- Additional Intermediate Shelves
- Adjustable Shelf(s)
- Recessed Handles
- Locks

Mounting Hardware Not Included

CUSTOM SIZES AVAILABLE

Corner Cabinet

HEIGHT	WIDTH	MODEL NUMBER
30	12	WCCD-12-30-Specify Length
36	12	WCCD-12-36-Specify Length
30	14	WCCD-14-30-Specify Length
36	14	WCCD-14-36-Specify Length

Standard Cabinet

HEIGHT	WIDTH	MODEL NUMBER
30	12	WCD-12-30-Specify Length
36	12	WCD-12-36-Specify Length
30	14	WCD-14-30-Specify Length
36	14	WCD-14-36-Specify Length

Email: salesandinfo@chainfabricator.com

Phone: (916) 638-7370 or 1-888-300-6196 Fax: (916) 638-1172

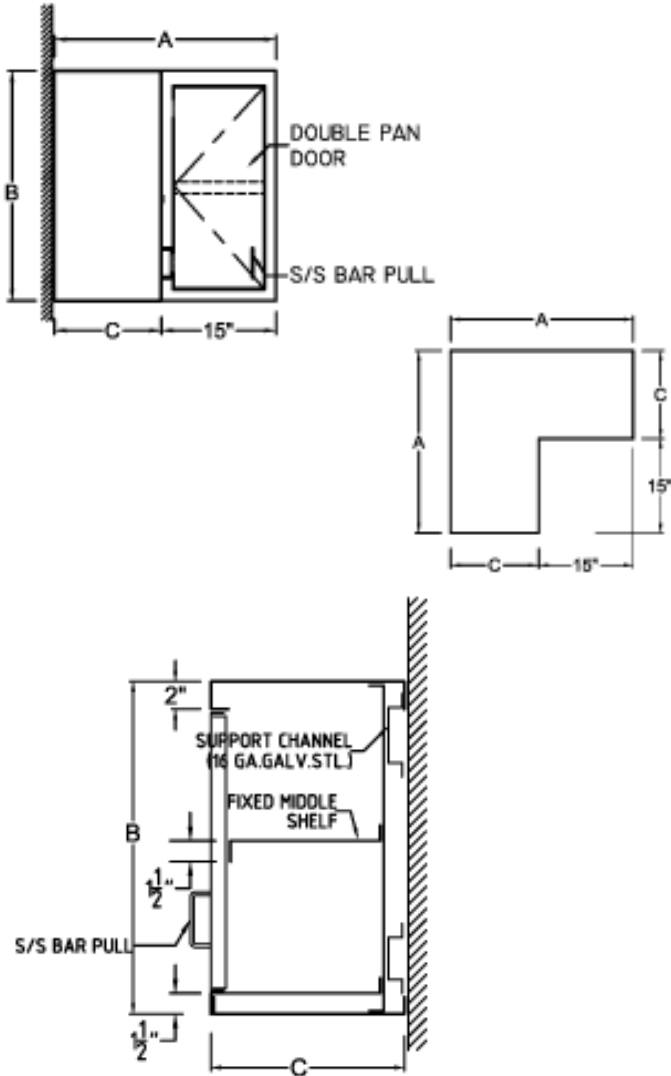
2650 Mercantile Dr., Suite C - Rancho Cordova, CA 95742



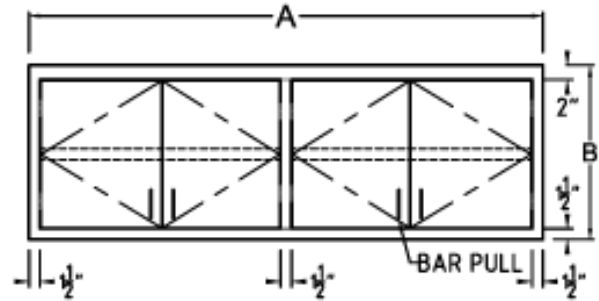
Wall Cabinet w/ Doors

CORNER CABINET

Model: WCCD- Specify Length

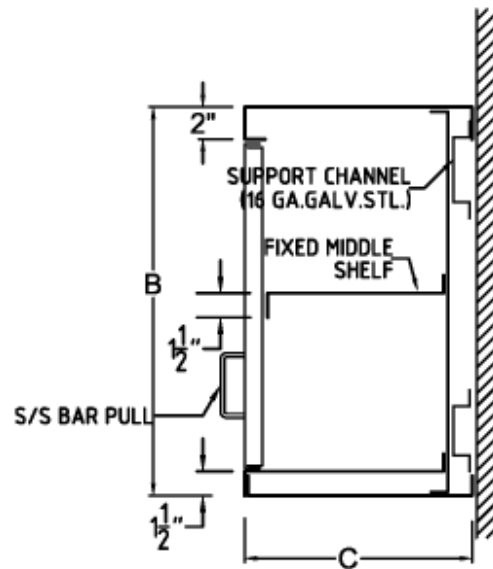


CUSTOM SIZES AVAILABLE



STANDARD CABINET

Model: WCD - Specify Length



Corner Cabinet

MODEL NUMBER	A	B	C
WCCD-12-30-Specify Length	Length	30	12
WCCD-12-36-Specify Length	Length	36	12
WCCD-14-30-Specify Length	Length	30	14
WCCD-14-36-Specify Length	Length	36	14

Standard Cabinet

MODEL NUMBER	A	B	C
WCD-12-30-Specify Length	Length	30	12
WCD-12-36-Specify Length	Length	36	12
WCD-14-30-Specify Length	Length	30	14
WCD-14-36-Specify Length	Length	36	14

Email: salesandinfo@chainfabricator.com

Phone: (916) 638-7370 or 1-888-300-6196 Fax: (916) 638-1172