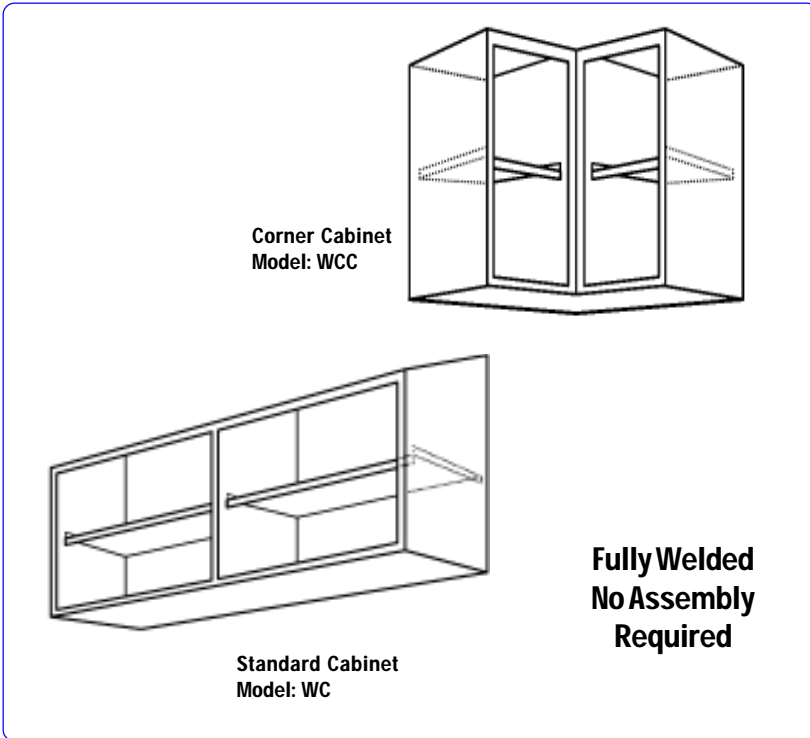




**Wall Cabinet No Doors**



**MATERIAL**

- 18g Stainless Steel, Type 304, #4 Finish
- 16g Galvanized Hanger Channel
- Stainless Steel Flag Hinge
- 14g 304/4 Wall Clips

**CONSTRUCTION**

- Fully welded construction.
- Fixed intermediate shelf.

**OPTIONS**

- 16 Gauge Construction
- Additional Intermediate Shelves
- Adjustable Shelf(s)
- Double Pan Doors

*Mounting Hardware Not Included*

***CUSTOM SIZES AVAILABLE***

**Corner Cabinet**

HEIGHT	WIDTH	MODEL NUMBER
30	12	WCC-12-30-Specify Length
36	12	WCC-12-36-Specify Length
30	14	WCC-14-30-Specify Length
36	14	WCC-14-36-Specify Length

**Standard Cabinet**

HEIGHT	WIDTH	MODEL NUMBER
30	12	WC-12-30-Specify Length
36	12	WC-12-36-Specify Length
30	14	WC-14-30-Specify Length
36	14	WC-14-36-Specify Length

Email: [salesandinfo@chainfabricator.com](mailto:salesandinfo@chainfabricator.com)

Phone: (916) 638-7370 or 1-888-300-6196 Fax: (916) 638-1172

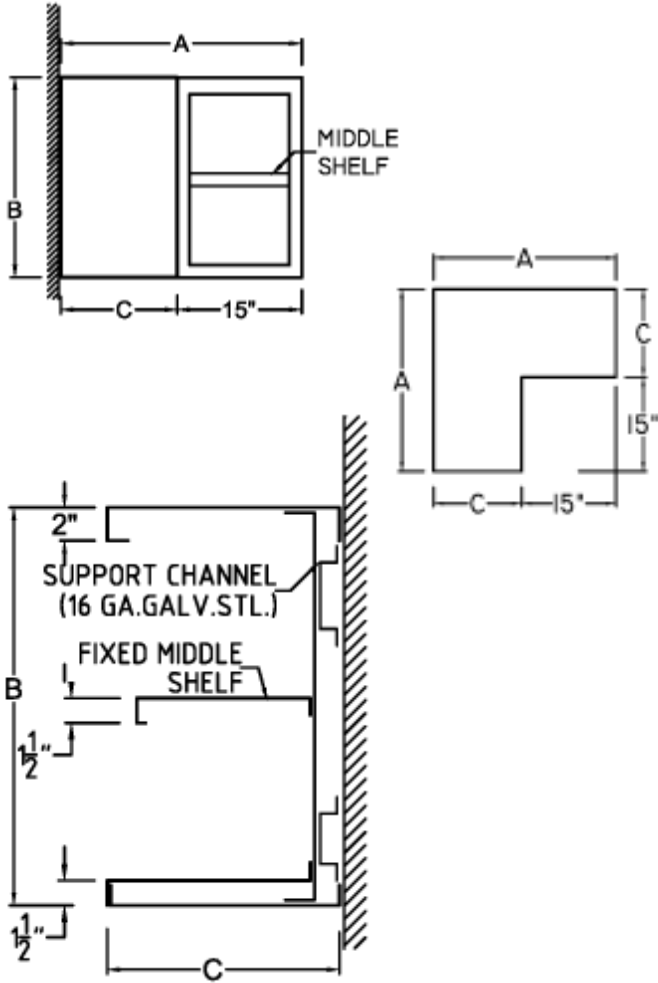
2650 Mercantile Dr., Suite C - Rancho Cordova, CA 95742

WC-3

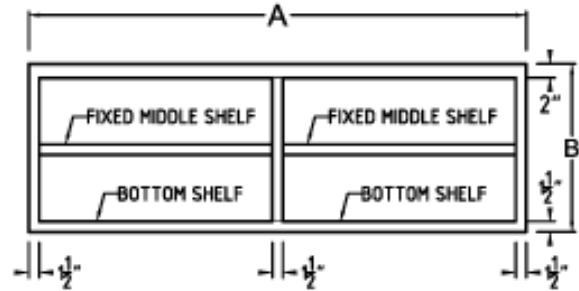


**CORNER CABINET**

Model: WCC- Specify Length

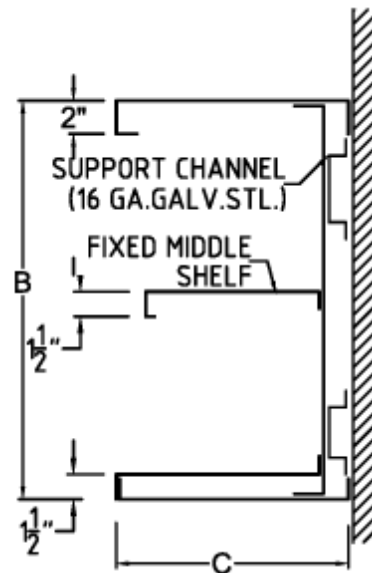


**CUSTOM SIZES AVAILABLE**



**STANDARD CABINET**

Model: WC - Specify Length



**Corner Cabinet**

MODEL NUMBER	A	B	C
WCC-12-30-Specify Length	Length	30	12
WCC-12-36-Specify Length	Length	36	12
WCC-14-30-Specify Length	Length	30	14
WCC-14-36-Specify Length	Length	36	14

**Standard Cabinet**

MODEL NUMBER	A	B	C
WC-12-30-Specify Length	Length	30	12
WC-12-36-Specify Length	Length	36	12
WC-14-30-Specify Length	Length	30	14
WC-14-36-Specify Length	Length	36	14

Email: [salesandinfo@chainfabricator.com](mailto:salesandinfo@chainfabricator.com)

Phone: (916) 638-7370 or 1-888-300-6196 Fax: (916) 638-1172