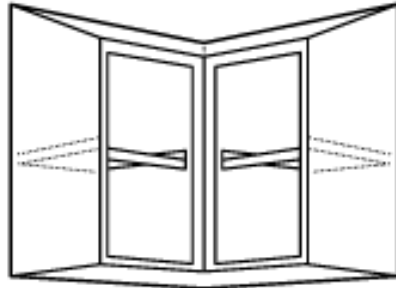


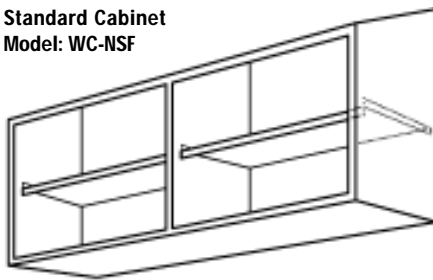


Wall Cabinet No Doors NSF



Corner Cabinet
Model: WCC-NSF

Standard Cabinet
Model: WC-NSF



**Fully Welded
No Assembly
Required**



MATERIAL

18g Stainless Steel, Type 304, #4 Finish

16g Galvanized Hanger Channel

Stainless Steel Flag Hinge

14g 304/4 Wall Clips

CONSTRUCTION

Built in compliance with NSF Standard No.2 and bear the NSF mark of approval.

Sloped design reduces dust build up.

Fully welded construction.

Fixed intermediate shelf.

OPTIONS

- 16 Gauge Construction
- Additional Intermediate Shelves
- Adjustable Shelf(s)

Mounting Hardware Not Included

CUSTOM SIZES AVAILABLE

Corner Cabinet

HEIGHT	WIDTH	MODEL NUMBER
30	12	WCC-NSF-12-30- <i>Specify Length</i>
36	12	WCC-NSF-12-36- <i>Specify Length</i>
30	14	WCC-NSF-14-30- <i>Specify Length</i>
36	14	WCC-NSF-14-36- <i>Specify Length</i>

Standard Cabinet

HEIGHT	WIDTH	MODEL NUMBER
30	12	WC-NSF-12-30- <i>Specify Length</i>
36	12	WC-NSF-12-36- <i>Specify Length</i>
30	14	WC-NSF-14-30- <i>Specify Length</i>
36	14	WC-NSF-14-36- <i>Specify Length</i>

Email: salesandinfo@chainfabricator.com

Phone: (916) 638-7370 or 1-888-300-6196 Fax: (916) 638-1172

2650 Mercantile Dr., Suite C - Rancho Cordova, CA 95742

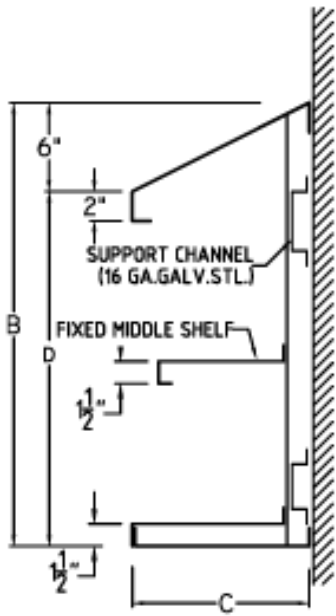
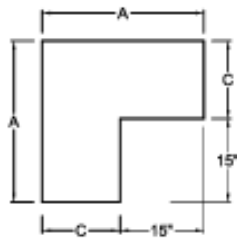
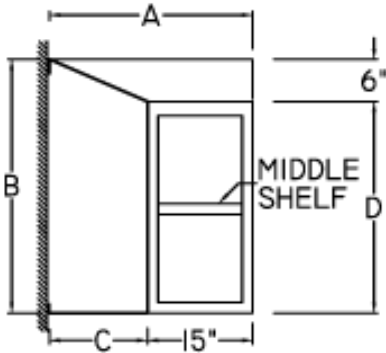
WC-NSF-3



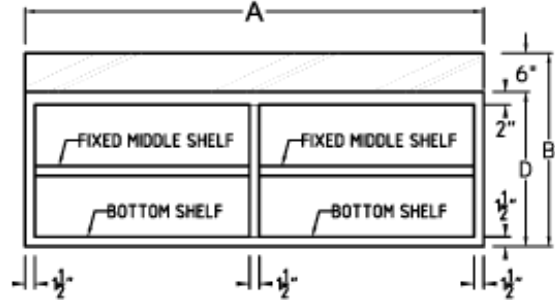
Wall Cabinet No Doors NSF

CORNER CABINET

Model: WCC-NSF- Specify Length

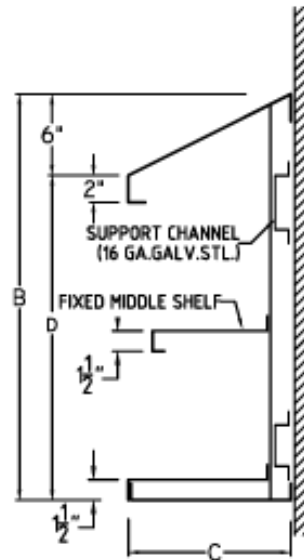


CUSTOM SIZES AVAILABLE



STANDARD CABINET

Model: WC-NSF - Specify Length



Corner Cabinet

MODEL NUMBER	A	B	C	D
WCC-NSF-12-30-Specify Length	Length	30	12	24
WCC-NSF-12-36-Specify Length	Length	36	12	30
WCC-NSF-14-30-Specify Length	Length	30	14	24
WCC-NSF-14-36-Specify Length	Length	36	14	30

Standard Cabinet

MODEL NUMBER	A	B	C	D
WC-NSF-12-30-Specify Length	Length	30	12	24
WC-NSF-12-36-Specify Length	Length	36	12	30
WC-NSF-14-30-Specify Length	Length	30	14	24
WC-NSF-14-36-Specify Length	Length	36	14	30

Email: salesandinfo@chainfabricator.com

Phone: (916) 638-7370 or 1-888-300-6196 Fax: (916) 638-1172